

ARTICLE



Metabolomics shows no impairment of the microenvironment of the cumulus–oocyte complex in women with isolated endometriosis

**BIOGRAPHY**

Dr Pierre-Emmanuel Bouet is an obstetrics and gynaecology specialist, completing his training in reproductive endocrinology and infertility at Montreal University Hospital and Ovo Clinic in 2015. He is Head of the Reproductive Medicine Unit at Angers University Hospital and is also a member of the INSERM U1083 research team.

Pierre-Emmanuel Bouet^{1,3,*}, Juan Manuel Chao de la Barca^{2,3}, Hady El Hachem⁴, Philippe Descamps¹, Guillaume Legendre¹, Pascal Reynier^{2,3}, Pascale May-Panloup^{1,3,5}

KEY MESSAGE

Metabolomics shows no impairment of the microenvironment of the cumulus–oocyte complex in the follicular fluid of women with isolated endometriosis.

ABSTRACT

Research question: Is there any metabolomic evidence of impairment of the cumulus–oocyte complex (COC) microenvironment in the follicular fluid of women with endometriosis?

Design: A prospective observational study from January to July 2018 at the Angers University Hospital, France. Seventy-nine women undergoing IVF with or without intracytoplasmic sperm injection (ICSI) were included: 39 for endometriosis-related infertility and 40 controls with other causes of infertility. A targeted quantitative metabolomic and lipidomic analysis was performed.

Results: Patient characteristics (age, body mass index, smoking status, hormonal profile and ovarian reserve markers) were comparable between the endometriosis and the control groups. There was no significant difference in the cumulative FSH dose used for stimulation between the endometriosis and the control groups (2732 versus 2257 IU, respectively). There were no differences in the oocyte maturity rates (72.2% versus 77.7%), or in the fertilization rates in IVF and ICSI (49.4% versus 50.2% and 76.4% versus 68.8%, respectively) between the endometriosis and control groups. Among the 188 metabolites analysed, 150 were accurately measured. Univariate analysis did not reveal any significant modification of metabolite concentrations, and none of the multivariate models discriminated between the two groups of patients, even when the study was restricted to the most severe form of endometriosis.

Conclusions: No specific metabolomic signature of endometriosis was found in the follicular fluid of women undergoing IVF. These results suggest that there is no microenvironmental impairment of the COC in cases of isolated endometriosis among women with infertility.

¹ Department of Reproductive Medicine, Angers University Hospital, Angers 49000, France

² Department of Biochemistry and Genetics, Angers University Hospital, Angers 49000, France

³ MITOVASC Institute, CNRS 6015, INSERM U1083, Angers University, Angers 49000, France

⁴ Department of Reproductive Medicine, Clemenceau Medical Centre Beirut, Lebanon

⁵ Reproductive Biology Unit, Angers University Hospital, Angers 49000, France

KEYWORDS

Endometriosis
Follicular fluid
IVF
Lipidomics
Metabolomics
Oocyte

INTRODUCTION

Endometriosis is a common gynaecological pathology affecting 5–10% of women of childbearing age (Bulun *et al.*, 2009), and it affects about 25% of women seeking infertility treatment (Schenken *et al.*, 1997; Wellbery, 1999). Endometriosis is difficult to diagnose because the symptoms, such as dysmenorrhoea and dyspareunia, are not specific. The current gold standard for confirming the diagnosis is laparoscopy (Poncelet and Ducarme, 2007), and on average, it is formally established after a 7-year delay (Nnoaham *et al.*, 2011). The identification of biomarkers, especially in the blood or urine, would offer a less invasive technique than surgery and greatly facilitate the diagnosis of endometriosis (May *et al.*, 2010). The mechanisms by which endometriosis causes infertility are probably numerous but are not yet clearly established (Bulun *et al.*, 2009). Endometriosis could have a negative impact on folliculogenesis, ovulation, oocyte quality, tubal mobility and implantation, and could involve mechanical, molecular, genetic and environmental factors (Macer *et al.*, 2012). Data from the current available literature are insufficient to conclude whether there is a link between endometriosis and oocyte quality impairment (Sanchez *et al.*, 2017), with contradictory results coming from four different meta-analyses (Barnhart *et al.*, 2002; Harb *et al.*, 2013; Rossi *et al.*, 2016; Yang *et al.*, 2015). Moreover, studies confirming the negative impact of endometriosis on oocyte quality have several confounding factors that could affect the results, such as the stage of endometriosis, previous disease-related medical/surgical treatments, and the possible concurrence of endometriosis and ovarian insufficiency, two of the most common causes of infertility.

Follicular fluid is produced by the transfer of blood plasma components across the blood follicular barrier, secretions of the theca and the granulosa cells, and molecules excreted by the oocytes (de la Barca *et al.*, 2017). The composition of the follicular fluid reflects the exchanges occurring between the oocyte and its microenvironment during the acquisition of gametic competence (Revelli *et al.*, 2009). Qualitative and quantitative alterations in the composition of the follicular fluid may be related to oocyte

quality and thus to embryonic quality (Da Broi *et al.*, 2018). Moreover, studies of the follicular fluid have allowed the identification of several biomarkers and altered metabolic pathways in several ovarian disorders such as diminished ovarian reserve (DOR) (de la Barca *et al.*, 2017; Fujii *et al.*, 2010) and polycystic ovarian syndrome (PCOS) (Cordeiro *et al.*, 2015).

Endometriosis patients have been found to have significantly higher levels of interleukin-8, interleukin-12 and adrenomedullin, an angiogenic mediator, as well as decreased fertilization rates and potentially decreased oocyte quality when compared with controls (Singh *et al.*, 2016). Lo Turco *et al.* (2013) used proteomic analysis of follicular fluid to show significant differences between women with endometriosis and women without, and between women with endometriosis who successfully conceived and those who did not. The proteins involved were apolipoprotein A-IV, transthyretin, complement factor I, vitronectin, kininogen 1 and focal adhesion kinase 1 (Lo Turco *et al.*, 2013). Only a few studies have focused on the metabolomic or lipidomic profiles in the follicular fluid of patients with endometriosis, and most of these studies were limited by the low number of participants (Cordeiro *et al.*, 2015; Karaer *et al.*, 2019; Marianna *et al.*, 2017; Sun *et al.*, 2018). The aim of the current study was to compare the metabolomic profiles of the follicular fluid in patients undergoing IVF for infertility secondary to endometriosis to those of patients without endometriosis, in order to analyse the potential impact of the disease on the oocyte microenvironment.

MATERIALS AND METHODS

This was a prospective observational study performed at the Angers University Hospital, France, from January to July 2018.

Study population

The follicular fluid retrieved from 79 women undergoing IVF was analysed, including 39 patients with endometriosis (endometriosis group) and 40 patients free from endometriosis (control group). The endometriosis group included women with minimal, mild or severe forms of endometriosis and for whom the diagnosis of endometriosis had been made either with ultrasound echography

or magnetic resonance imaging or after abdominal or pelvic surgery. Of these 39 patients, 32 had severe endometriosis, defined as stage III or stage IV endometriosis, according to the classification of the American Society of Reproductive Medicine (Schenken *et al.*, 1997). All seven patients with stage I and II disease had a history of abdominopelvic surgery that identified the peritoneal lesions and confirmed the diagnosis.

The control group included non-endometriosis women, under infertility management for unexplained infertility, male infertility or a tubal factor.

All the women included were treated with IVF or with intracytoplasmic sperm injection (ICSI), depending on the type of infertility. The indications for IVF included unexplained infertility and tubal factor and for ICSI antecedents of failed fertilization or suboptimal fertilization during an earlier IVF attempt, i.e. a fertilization rate below 20%, and male infertility with severe sperm abnormalities.

Exclusion criteria for both groups were PCOS, a history of cancer, and premature ovarian failure.

In the study centre, the first line protocol for endometriosis is the long protocol, based on several studies showing a better pregnancy rate with this type of protocol (Kolanska *et al.*, 2017; Ma *et al.*, 2008). All patients had ovarian stimulation with either a long protocol or an antagonistic protocol, using either recombinant or urinary gonadotrophins. When at least three follicles reached a size of 17 mm at ultrasound monitoring, ovulation was triggered with a total of 250 µg of recombinant human chorionic gonadotrophin (HCG) (Ovitrelle® Ovitrelle, Merck, Lyon, France). Ultrasound-guided, transvaginal oocyte retrieval was performed 36 h after the administration of HCG. Follicular fluid was collected from all aspirated follicles. Patients were enrolled on the morning of oocyte retrieval.

The rate of oocyte maturity was defined as the ratio between the number of oocytes injected and the number of oocytes recovered. Fertilization rates in IVF or IVF/ICSI procedures were defined as the ratio of the number of fertilized oocytes, with two pronuclei observed at 18 h post-fertilization, to the number of oocytes inseminated or injected.

Samples

Once the oocytes were isolated for fertilization and culture, follicular fluid samples were collected in the study laboratory, pooled and immediately centrifuged for 10 min at 3000g at +4°C before recovery of the supernatant, which was conserved at -80°C in 500 µl aliquots until the metabolomic analysis.

Targeted quantitative metabolomic analysis was carried out using the AbsoluteIDQ® p180 Kit (Biocrates Life Sciences AG, Innsbruck, Austria). This kit uses mass spectrometry (QTRAP 5500, SCIEX, Villebon-sur-Yvette, France) to quantify up to 188 different endogenous molecules distributed as follows: free carnitine (C0), 39 acylcarnitines (C), the sum of hexoses (H1), 21 amino acids, 21 biogenic amines and 105 lipids. Lipids are distributed in the kit in four different classes: 14 lysophosphatidylcholines (lysoPC), 38 diacyl phosphatidylcholines (PCaa), 38 acyl-alkyl-phosphatidylcholines (PCae) and 15 sphingomyelins (SM). Flow-injection analysis coupled with tandem mass spectrometry (FIA-MS/MS) was used for the analysis of carnitine, acylcarnitines, lipids and hexoses. Liquid chromatography was used for separating amino acids and biogenic amines before quantitation with mass spectrometry (MS).

Each follicular fluid sample was thoroughly vortexed after thawing and centrifuged at 4°C for 5 min at 5000g. Ten microliters of each sample were then added to the filter on the upper wells of the 96-well plate. Metabolites were extracted and derivatized for the quantitation of amino acids and biogenic amines. The extracts were finally diluted with MS running solvent before FIA and LC-MS/MS analysis. Three quality controls composed of human plasma samples at three concentration levels: low (QC1), medium (QC2) and high (QC3), were used to evaluate the performance of the analytical assay. A seven-point serial dilution of calibrators was added to the kit's 96-well plate to generate calibration curves for the quantification of amino acids and biogenic amines.

The primary endpoint of the study was to analyse and compare the mean concentrations of several metabolites to try and identify specific metabolic biomarkers of endometriosis.

Statistical analysis

The raw data were examined before statistical analysis in order to exclude

metabolites with concentration values that are more than 20% below the lower limit of quantitation or above the upper limit of quantitation. Multivariate analysis was performed using principal component analysis (PCA) for the detection of sample grouping and outliers. Orthogonal partial least squares discriminant analysis (OPLS-DA) was then applied to maximize the variation between the endometriosis and control groups, and to determine the metabolites contributing to this variation. The quality of the OPLS-DA model was validated by two parameters, i.e. goodness of fit (R^2), and goodness of prediction indicated by the cumulated Q^2 value (Q^2_{cum}). A threshold of 0.5 for Q^2_{cum} was used to determine whether an OPLS-DA model could be considered to have a good ($Q^2_{cum} \geq 0.5$) or a poor ($Q^2_{cum} < 0.5$) predictive capability. Multivariate data analysis was conducted using SIMCA-P v.14.0 (Umetrics, Umeå, Sweden).

Univariate analysis was performed with the bilateral Student's *t*-test. The Benjamini-Hochberg correction was applied in order to keep the risk of type I error below 5%. Differences were considered statistically significant for *P*-values <0.05.

Ethical approval

The collection of follicular fluid samples was approved on 26 September 2017 by the Ethics Committee of the University Hospital of Angers, France (number DC-2014-2224 and AC-2016-2799), and all 79 participants gave their written informed consent.

RESULTS

Baseline characteristics of patients and cycles

Patient characteristics (age, body mass index [BMI], tobacco use, hormonal profile, ovarian reserve markers [FSH, anti-Müllerian hormone (AMH) and antral follicle count (AFC)]) are listed in [TABLE 1](#). They were comparable between the endometriosis and control groups. Out of 39 patients in the endometriosis group, 32 (82%) had severe endometriosis, all of them with endometrioma. On the other hand, seven patients (18%) in the endometriosis group had only peritoneal disease that was diagnosed by laparoscopy, without endometriomas, and were therefore classified as stage I-II. Characteristics were also comparable between patients with stage I-II and

patients with severe endometriosis (data not shown).

The cycle characteristics are also described in [TABLE 1](#). There were no differences in the oocyte maturity rates (72.2% versus 77.7%, $P = 0.6$), or in the fertilization rates in IVF and ICSI (49.4% versus 50.2%, $P = 0.9$ and 76.4% versus 68.8%, $P = 0.53$, respectively) between the endometriosis and control groups.

A sub-analysis was performed comparing the 32 patients with severe endometriosis to the control group ([TABLE 1](#)). Patient characteristics (age, BMI, tobacco usage, hormonal profile and ovarian reserve markers) were also comparable between these two groups. No significant difference was found in the oocyte maturity rate (72.6% versus 77.7%, $P = 0.64$) or in the fertilization rates in IVF and ICSI (50.0% versus 50.2%, $P = 0.98$, and 75.4% versus 68.8%, $P = 0.59$, respectively) between the severe endometriosis group and the control group.

Metabolomic analysis

Among the 188 metabolites analysed, 150 were accurately measured, including hexoses, carnitine and four short chain acyl-carnitines, 21 amino acids, 16 biogenic amines and serotonin, histamine, putrescine, spermine, spermidine and taurine, 16 lysophosphatidylcholines, 70 phosphatidylcholines and 15 sphingomyelins. The follicular fluid concentrations (µmol/l) of the 11,139 measured metabolites in the 79 individuals are given in [Supplementary Table 1](#).

After application of the Benjamini-Hochberg correction, no significant differences in mean metabolite concentrations were found between the endometriosis and the control groups. PCA showed no grouping of data according to the presence of endometriosis or any other characteristic ([FIGURE 1](#): parameters included in PC-1 and PC-2). PCA was performed for all endometriosis patients and controls ([FIGURE 1A](#)), as well as for the subgroup of patients with severe endometriosis and controls ([FIGURE 1B](#)).

In order to analyse whether the FSH dose received had any impact on the metabolomic signature in patients with endometriosis, they were divided into

TABLE 1 BASELINE CHARACTERISTICS OF PATIENTS AND CYCLES IN ENDOMETRIOSIS GROUP, IN THE SUBGROUP OF PATIENTS WITH SEVERE ENDOMETRIOSIS AND IN THE CONTROL GROUP

	Endometriosis group (n = 39)	Severe endometriosis group (n = 32)	Control group (n = 40)
Age (years)	32.3 ± 4.1	32.4 ± 3.9	31.6 ± 4.4
BMI (kg/m ²)	23.5 ± 4.2	23.1 ± 4.1	24.1 ± 3.9
Smoking status			
Non-smoker	24 (61.5)	19 (59.3)	24 (60)
Smoker	3 (7.7)	7 (21.9)	5 (12.5)
Former smoker	8 (20.5)	3 (9.4)	10 (25)
Information missing	4 (10.3)	3 (9.4)	1 (2.5)
Baseline oestradiol (pg/ml)	51.7 ± 45.0	50.4 ± 47.9	37.6 ± 16.1
Baseline FSH (IU/l)	7.6 ± 3.2	7.6 ± 3.4	8.5 ± 2.4
Baseline LH (IU/l)	4.7 ± 1.9	4.5 ± 1.6	5.5 ± 2.2
Baseline AMH (ng/ml)	2.6 ± 1.7	2.8 ± 1.9	3.1 ± 1.9
AFC	17.3 ± 7.9	17.6 ± 7.8	17.9 ± 6.8
Total dose of FSH per cycle (IU)	2732 ± 1250	2787 ± 1136	2257 ± 705
Type of protocol ^a			
Antagonist	21 (54.8)	16 (50.0)	39 (97.5)
Agonist	18 (46.2)	16 (50.0)	1 (2.5)
Stimulation			
FSH	26 (66.7)	22 (68.7)	33 (82.5)
FSH + LH	13 (33.3)	10 (31.3)	7 (17.5)
Treatment type			
IVF	19 (48.7)	13 (40.6)	16 (40.0)
ICSI	20 (51.3)	19 (59.4)	24 (60.0)
Oocytes per retrieval ^a	8.6 ± 6.8	8.3 ± 7.3	13.3 ± 5.8
Rate of oocyte maturity in ICSI (%) ^b	72.2	72.6	77.7
Fertilization rate in IVF (%) ^c	49.4	50.0	50.2
Fertilization rate in ICSI (%) ^d	76.4	75.4	68.8
Ongoing pregnancy rate (%) ^e	13.0	15.6	20.0

Data are expressed as n (%), percentage or mean ± SD.

AFC = antral follicle count; AMH = anti-Müllerian hormone; BMI = body mass index; ICSI = intracytoplasmic sperm injection.

^a Statistically significant differences ($P < 0.001$) between endometriosis group and control group and between severe endometriosis group and control group. All other P -values are non-significant.

^b Number of mature oocytes injected / number of oocytes recovered.

^c Number of embryos obtained at stage 2 pronuclei / number of inseminated oocytes.

^d Number of embryos obtained at stage 2 pronuclei / number of oocytes injected.

^e Ongoing pregnancy rate was defined when the pregnancy had completed >20 weeks of gestation.

two groups: those receiving a total dose of FSH per cycle ≥ 3000 IU ($n = 15$) and those receiving < 3000 IU ($n = 24$). No predictive multivariate OPLS-DA was found to separate these two groups. Furthermore, when the FSH dose was set as the predictive dependent variable, no predictive multivariate (OPLS) model was found.

Finally, in order to assess the impact of age, patients in both groups were divided into three subgroups: ≤ 30 years old, between 30 and 34 years old, and ≥ 35 years old, and OPLS-DA models were constructed for each subgroup in order to take age into account as a possible confounding factor. However, no

predictive OPLS-DA models were found to separate controls from patients with endometriosis in any age subgroups.

Multivariate supervised modelling failed to find a predictive OPLS-DA model discriminating between the endometriosis and control groups with an even negative value for cumulated Q^2_{cum} (FIGURE 2A), and between patients with severe endometriosis ($n = 32$) and the control group (FIGURE 2B). Negative Q^2_{cum} values indicate very poor predictive capabilities, even when relatively well-separated groups appear in the scatter plot. This separation is due to overoptimistic models that find directions or latent

variables where compared groups seem well discriminated. However, these latent variables do not contain systematic variations of the original predictive variables (i.e. metabolites) determining group discrimination, but (random) noise instead. Therefore, when a sample set, not used for model construction but instead coming from the same population in which the model has been built, is submitted to this model, its predictive capabilities (i.e. right class allocation) are very poor and not very different from the prediction of a random model (i.e. flipping a coin to predict whether a patient belongs to the endometriosis or to the control group).

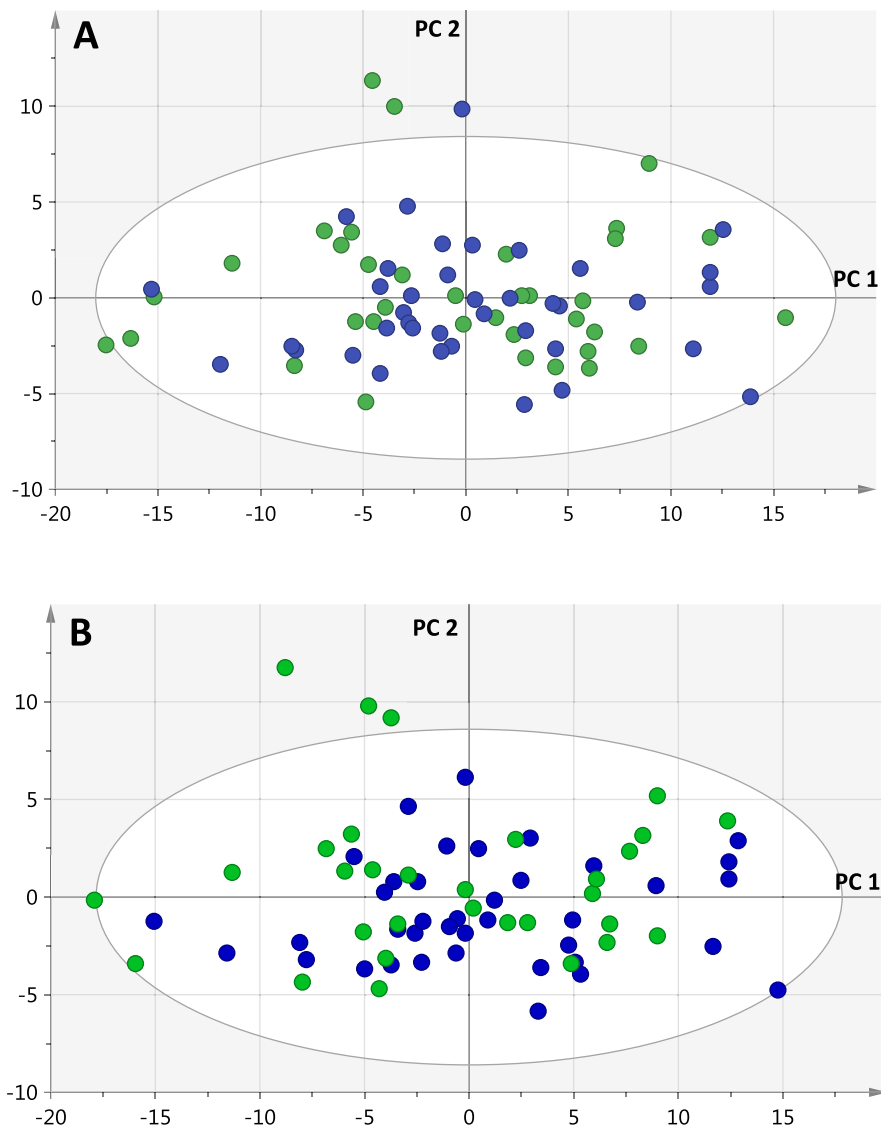


FIGURE 1 First principal plan scatter plot of the PCA built with 141 metabolites accurately measured in follicular fluid of endometriosis and control patients (A) or severe endometriosis and control patients (B). No grouping of data can be distinguished. Even when some points appear out of the confidence ellipse, they are not stronger outliers when considering not only the first two but all the principal components. Green circles represent endometriosis patients and blue circles control patients (PCA = principal component analysis: PC 1, 2 = first and second principal component).

DISCUSSION

The current study aimed to analyse the impact of endometriosis on female fertility based on metabolomic analysis of the follicular fluid in patients undergoing IVF/ICSI. An attempt was made to find specific biomarkers of the disease that would improve understanding of the pathophysiologic mechanisms by which endometriosis negatively affects the oocyte microenvironment and fertility.

Several metabolomic signatures related to endometriosis have been recently identified in biological fluids. Indeed, altered levels of amino acids, purines

and phospholipids were found in the endometrium (*Li et al., 2018a, 2018b*), while altered levels of carnitine, acylcarnitines, phosphatidylcholines and sphingomyelins were found in the peritoneal fluid (*Vouk et al., 2016*), and altered levels of acylcarnitines were found in the plasma (*Letsiou et al., 2017*). Except for the purine metabolites, all these metabolites were analysed by the study centre's analytical pipeline.

On the other hand, several metabolomic or lipidomic signatures in the follicular fluid of patients with endometriosis. *Cordeiro et al. (2015)* compared the

follicular fluid lipidome of 10 patients with endometriosis to 10 controls, and found increased concentrations of sphingolipids and phosphatidylcholines in the endometriosis group. *Marianna et al. (2017)* compared the metabolome of the follicular fluid of 16 patients with endometriosis stage I–II ($n = 8$) or stage III–IV ($n = 8$) to 7 controls, and found significantly higher concentrations of phospholipids and lactates in the endometriosis group, and significantly lower concentrations of fatty acids, lysine, choline, glucose, aspartate, alanine, leucine, valine, proline and phosphocholine. A recent metabolomic study that used nuclear

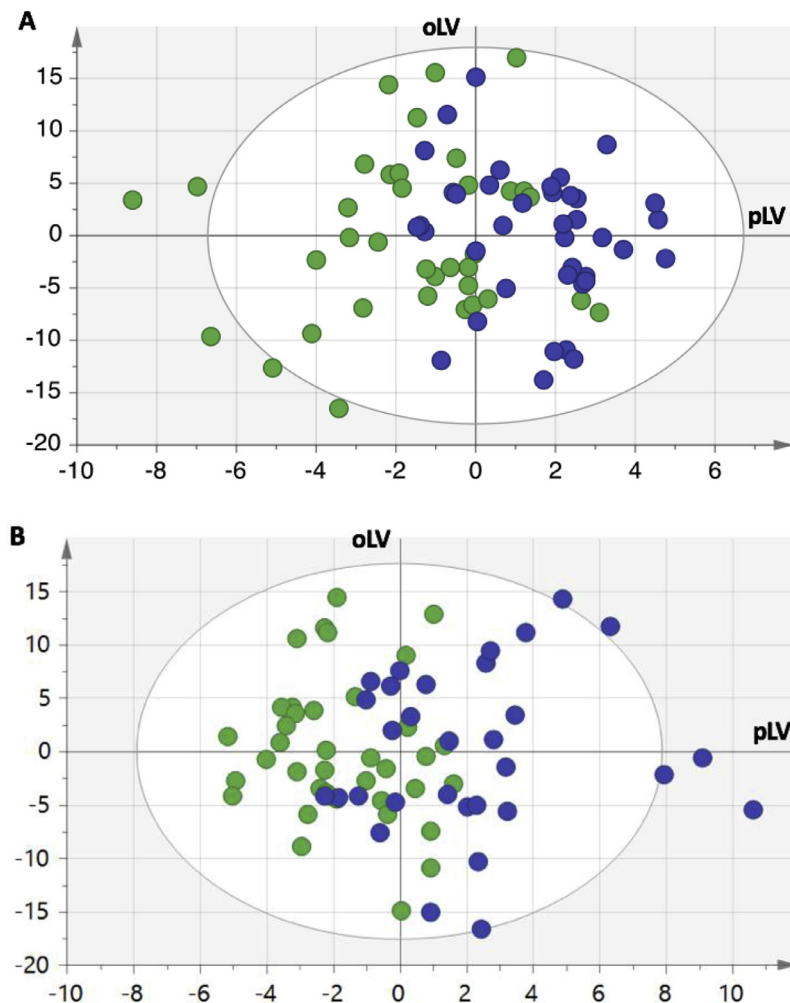


FIGURE 2 OPLS-DA scatter plot for models comparing all endometriosis patients (A) or only patients with severe endometriosis (B) to the control group, using 141 accurately measured metabolites as predictive variables and endometriosis status as explained variable. When points are projected to the predictive latent variable (pLV), no group separation is achieved in either case by the OPLS-DA models. This graphical representation is in total agreement with the poor predictive qualities of the supervised models. Green circles represent endometriosis patients and blue circles represent control patients (OPLS-DA = orthogonal partial least squares discriminant analysis; oLV = orthogonal latent variable; pLV = predictive latent variable).

magnetic resonance spectroscopy in 12 endometriotic patients and 12 controls found elevated lactate, glucose, pyruvate and valine levels in cases of endometriosis (Karaer *et al.*, 2019).

The current study assessed these same metabolites, but did not find any discriminant signature in the follicular fluid of patients with endometriosis, regardless of the stage of the disease, despite using the same rigorously standardized targeted metabolomic methods used in a previous study in patients with DOR, and which showed significant differences (de la Barca *et al.*, 2017). Thus, no attempt was made to identify any significantly modified metabolites with univariate analysis coupled with the Bonferroni–Hochberg correction (a necessary correction in the context of multiple comparisons to

avoid type I errors). Furthermore, this study did not find any OPLS-DA model discriminating between the endometriosis and the control group, even when the study was restricted to the most severe forms of endometriosis (stages III–IV).

Several factors could explain the discordance between the findings of this study and the published literature, i.e. the lack of a specific metabolomics signature in the follicular fluid of patients with endometriosis. First of all, most of the published studies included relatively small numbers of patients, around 10–15 in the endometriosis and control groups, whereas this study included 39 patients and 40 controls, thus improving its statistical power. On the other hand, most of these studies included women with a high risk of DOR: Marianna *et al.* (2017)

included women with an average age of 35 years and with low serum AMH levels (<2 ng/ml), whereas Karaer *et al.*, (2019) included women up to 40 years of age. It has previously been shown that women with DOR had a significantly different metabolomics signature in the follicular fluid when compared with controls with a normal ovarian reserve (de la Barca *et al.*, 2017). Therefore, the DOR could have influenced the differences found that were attributed to endometriosis in the aforementioned studies.

The number of oocytes retrieved was significantly lower in the endometriosis group compared with the control group, but the rate of oocyte maturity and fertilization rate were comparable between the two groups. Several studies have already reported a lower number

of oocytes retrieved in endometriosis patients (Sanchez *et al.*, 2017). This could be due to the difficulties sometimes encountered during retrieval in cases of severe endometriosis (Benaglia *et al.*, 2018). Indeed, access to the follicles may be difficult because of the presence of a large endometrioma, or because of the position of the ovary (retro-uterine or high in the pelvic cavity). Moreover, there is the risk of an infectious complication should the puncture needle pass through an endometrioma or a dilated tube (Benaglia *et al.*, 2018).

To date, there is no consensus on the direct impact of endometriosis on the capacity of the oocyte to fertilize and sustain early embryo development. A recent literature review (Sanchez *et al.*, 2017) analysed the conflicting results of all published meta-analyses that evaluated the fertilization rate for patients with endometriosis (Barnhart *et al.*, 2002; Harb *et al.*, 2013; Rossi *et al.*, 2016; Yang *et al.*, 2015). The oldest study, dating back to 2002, compared the fertilization rate for patients with isolated endometriosis, i.e. with the absence of any other infertility factors, to that of a control group of patients with tubal factor infertility (Barnhart *et al.*, 2002). The authors found a significantly lower fertilization rate in the isolated endometriosis group compared with the control group (59.5% versus 66.1%, $P < 0.001$) (Barnhart *et al.*, 2002). More recently, two other meta-analyses found no significant decrease in the fertilization rate or the embryo quality, even in patients with severe endometriosis or endometriomas (Harb *et al.*, 2013; Yang *et al.*, 2015). In this study, the ovarian reserve markers (AFC, AMH, FSH) were comparable between the endometriosis and control groups, even in the presence of endometriomas. These findings are in accordance with studies showing that endometriosis and endometriomas do not necessarily diminish the ovarian reserve by themselves, but it is the surgery of these lesions that does the damage (Streuli *et al.*, 2012). Furthermore, no difference was found in the oocyte maturity and fertilization rates between the two groups. The relationship between oocyte quantity and quality is still the subject of debate: while some studies report a decrease in oocyte quality that parallels the decrease in ovarian reserve (Gleicher *et al.*, 2009, 2011), others report that there is no direct correlation, with women with DOR having

equivalent embryo quality and live birth rates to matched controls with normal ovarian reserve (Morin *et al.*, 2018). The endometriosis patients in this study had normal ovarian reserve, thus a probably normal oocyte quality. The fact that no specific metabolomic signature was found in their follicular fluid could indicate that, in the absence of other confounding factors, endometriosis had no deleterious effect on the oocyte microenvironment.

One of the limitations of this study is the fact that ovarian stimulation with exogenous gonadotrophins could have altered follicular metabolomics. Indeed, an in-vitro model and an animal study have shown that ovarian stimulation with gonadotrophins could modify the metabolomic and the lipid profile, in the serum as well as the follicular fluid (Perovic *et al.*, 2019; Santos *et al.*, 2017).

Several ovarian pathologies have been shown to alter the microenvironment of the COC, but the impact of endometriosis in women with infertility remains the subject of debate. The current study did not find any specific metabolomic signature of endometriosis in the follicular fluid of women with infertility undergoing IVF/ICSI, thus confirming the lack of impairment of the COC microenvironment by endometriosis.

ACKNOWLEDGEMENTS

We are grateful to Kanaya Malkani for critical reading and comments on the manuscript and to the women who participated in this study.

This work was supported by the University Hospital of Angers, the University of Angers, and the French national research centres, INSERM and CNRS.

SUPPLEMENTARY MATERIALS

Supplementary material associated with this article can be found, in the online version, at [doi:10.1016/j.rbmo.2019.08.001](https://doi.org/10.1016/j.rbmo.2019.08.001).

REFERENCES

- Barnhart, K., Dunsmoor-Su, R., Coutifaris, C. **Effect of endometriosis on in vitro fertilization.** *Fertil. Steril.* 2002; 77: 1148–1155
- Benaglia, L., Busnelli, A., Biancardi, R., Vegetti, W., Reschini, M., Vercellini, P., Somigliana, E. **Oocyte retrieval difficulties in women with ovarian endometriomas.** *Reprod. Biomed. Online* 2018; 37: 77–84
- Bulun, S.E. **Endometriosis.** *N. Engl. J. Med.* 2009; 360: 268–279
- Cordeiro, F.B., Cataldi, T.R., Perkel, K.J., do Vale Teixeira da Costa, L., Rochetti, R.C., Stevanato, J., Eberlin, M.N., Zylbersztejn, D.S., Cedenho, A.P., Lo Turco, E.G. **Lipidomics analysis of follicular fluid by ESI-MS reveals potential biomarkers for ovarian endometriosis.** *J. Assist. Reprod. Genet.* 2015; 32: 1817–1825
- Cordeiro, F.B., Cataldi, T.R., do Vale Teixeira da Costa, L., de Lima, C.B., Stevanato, J., Zylbersztejn, D.S., Ferreira, C.R., Eberlin, M.N., Cedenho, A.P., Lo Turco, E.G. **Follicular fluid fingerprinting from women with PCOS and hyper response during IVF treatment.** *J. Assist. Reprod. Genet.* 2015; 32: 45–54
- Da Broi, M.G., Giorgi, V.S.I., Wang, F., Keefe, D.L., Albertini, D., Navarro, A. **Influence of follicular fluid and cumulus cells on oocyte quality: clinical implications.** *J. Assist. Reprod. Genet.* 2018; 35: 735–751
- de la Barca, J.M.C., Boueilh, T., Simard, G., Boucret, L., Ferré-L'Hotellier, V., Tessier, L., Gavras, C., Bouet, P.E., Descamps, P., Procaccio, V., Reynier, P., May-Panloup, P. **Targeted metabolomics reveals reduced levels of polyunsaturated choline plasmalogens and a smaller dimethylarginine/arginine ratio in the follicular fluid of patients with a diminished ovarian reserve.** *Hum. Reprod.* 2017; 32: 2269–2278
- Fujii, E.Y., Nakayama, M. **The measurements of RAGE, VEGF, and AGEs in the plasma and follicular fluid of reproductive women: the influence of aging.** *Fertil. Steril.* 2010; 94: 694–700
- Gleicher, N., Weghofer, A., Oktay, K., Barad, D. **Do etiologies of premature ovarian aging (POA) mimic those of premature ovarian failure (POF)?** *Hum. Reprod.* 2009; 24: 2395–2400
- Gleicher, N., Weghofer, A., Barad, D.H. **Defining ovarian reserve to better understand ovarian aging.** *Reprod. Biol. Endocrinol.* 2011; 9: 23
- Harb, H.M., Gallos, I.D., Chu, J., Harb, M., Coomarasamy, A. **The effect of endometriosis on in vitro fertilisation outcome: a systematic review and meta-analysis.** *BJOG* 2013; 120: 1308–1320
- Karaer, A., Tuncay, G., Mumcu, A., Dogan, B. **Metabolomics analysis of follicular fluid in women with ovarian endometriosis undergoing in vitro fertilization.** *Syst. Biol. Reprod. Med.* 2019; 65: 39–47
- Kolanska, K., Cohen, J., Bendifallah, S., Selleret, L., Antoine, J.M., Chabbert-Buffet, N., Darai, E., d'Argent, E.M. **Pregnancy outcomes after controlled ovarian hyperstimulation in women with endometriosis-associated infertility: GnRH-agonist versus GnRH-antagonist.** *J. Gynecol. Obstet. Hum. Reprod.* 2017; 46: 681–686
- Letsiou, S., Peterse, D.P., Fassbender, A., Hendriks, M.M., van den Broek, N.J., Berger, R., O, D.F., Vanhie, A., Vodolazkaia, A., Van

- Langendonck, A., Donnez, J., Harms, A.C., Vreeken, R.J., Groothuis, P.G., Dolmans, M.M., Brenkman, A.B., D'Hooghe, T.M. **Endometriosis is associated with aberrant metabolite profiles in plasma.** *Fertil. Steril.* 2017; 107: 699–706.e6
- Li, J., Gao, Y., Guan, L., Zhang, H., Sun, J., Gong, X., Li, D., Chen, P., Ma, Z., Liang, X., Huang, M., Bi, H. **Discovery of Phosphatidic Acid, Phosphatidylcholine, and Phosphatidylserine as Biomarkers for Early Diagnosis of Endometriosis.** *Front. Physiol.* 2018; 9: 14
- Li, J., Guan, L., Zhang, H., Gao, Y., Sun, J., Gong, X., Li, D., Chen, P., Liang, X., Huang, M., Bi, H. **Endometrium metabolomic profiling reveals potential biomarkers for diagnosis of endometriosis at minimal-mild stages.** *Reprod. Biol. Endocrinol.* 2018; 16: 42
- Lo Turco, E.G., Cordeiro, F.B., Lopes, P.H., Gozzo, F.C., Pilau, E.J., Soler, T.B., da Silva, B.F., Del Giudice, P.T., Bertolla, R.P., Fraietta, R., Cedeno, A.P. **Proteomic analysis of follicular fluid from women with and without endometriosis: new therapeutic targets and biomarkers.** *Mol. Reprod. Dev.* 2013; 80: 441–450
- Ma, C., Qiao, J., Liu, P., Chen, G. **Ovarian suppression treatment prior to in-vitro fertilization and embryo transfer in Chinese women with stage III or IV endometriosis.** *Int. J. Gynaecol. Obstet.* 2008; 100: 167–170
- Macer, M.L., Taylor, H.S. **Endometriosis and infertility: a review of the pathogenesis and treatment of endometriosis-associated infertility.** *Obstet. Gynecol. Clin. North. Am.* 2012; 39: 535–549
- Marianna, S., Alessia, P., Susan, C., Francesca, C., Angela, S., Francesca, C., Antonella, N., Patrizia, I., Nicola, C., Emilio, C. **Metabolomic profiling and biochemical evaluation of the follicular fluid of endometriosis patients.** *Mol. Biosyst.* 2017; 13: 1213–1222
- May, K.E., Conduit-Hulbert, S.A., Villar, J., Kirtley, S., Kennedy, S.H., Becker, C.M. **Peripheral biomarkers of endometriosis: a systematic review.** *Hum. Reprod. Update* 2010; 16: 651–674
- Morin, S.J., Patounakis, G., Juneau, C.R., Neal, S.A., Scott, R.T.Jr, Seli, E. **Diminished ovarian reserve and poor response to stimulation in patients < 38 years old: a quantitative but no qualitative reduction in performance.** *Hum. Reprod.* 2018; 33: 1489–1498
- Nnoaham, K.E., Hummelshoj, L., Webster, P., d'Hooghe, T., de Cicco Nardone, F., de Cicco Nardone, C., Jenkinson, C., Kennedy, S.H., Zondervan, K.T. **Impact of endometriosis on quality of life and work productivity: a multicenter study across ten countries.** *Fertil. Steril.* 2011; 96: 366–373.e8
- Perovic, M.D., Sudar-Milovanovic, E.M., Simonovic, E.D., Resanovic, I.M., Draganic, V.D., Radakovic, J.D., Soldatovic, I.A., Isenovic, E.R. **Hypothesis regarding the effects of gonatropins on the level of free fatty acids and phospholipids in serum and follicular fluid during controlled ovarian stimulation.** *Med. Hypotheses* 2019; 123: 30–34
- Poncelet, C., Ducarme, G. **Endometriosis: good practice rules for diagnostic laparoscopy.** *J. Gynecol. Obstet. Biol. Reprod.* 2007; 36: 135–140
- Revelli, A., Delle Piane, L., Casano, S., Molinari, E., Massobrio, M., Rinaudo, P. **Follicular fluid content and oocyte quality: from single biochemical markers to metabolomics.** *Reprod. Biol. Endocrinol.* 2009; 7: 40
- Rossi, A.C., Prefumo, F. **The effects of surgery for endometriosis on pregnancy outcomes following in vitro fertilization and embryo transfer: a systematic review and meta-analysis.** *Arch. Gynecol. Obstet.* 2016; 294: 647–655
- Sanchez, A.M., Vanni, V.S., Bartiromo, L., Papaleo, E., Zilberberg, E., Candiani, M., Orvieto, R., Vignani, P. **Is the oocyte quality affected by endometriosis? A review of the literature.** *J. Ovarian. Res.* 2017; 10: 43
- Santos, P.H., Fontes, P.K., Franchi, F.F., Nogueira, M.F., Belaz, K.R., Tata, A., Eberlin, M.N., Sudano, M.J., Barros, C.M., Castilho, A.C. **Lipid profiles of follicular fluid from cows submitted to ovarian superstimulation.** *Theriogenology* 2017; 94: 64–70
- Schenken, R.S., Guzick, D.S. **Revised endometriosis classification: 1996.** *Fertil. Steril.* 1997; 67: 815–816
- Singh, A.K., Dutta, M., Chattopadhyay, R., Chakravarty, B., Chaudhury, K. **Intrafollicular interleukin-8, interleukin-12, and adrenomedullin are the promising prognostic markers of oocyte and embryo quality in women with endometriosis.** *J. Assist. Reprod. Genet.* 2016; 33: 1363–1372
- Streuli, I., de Ziegler, D., Gayet, V., Santulli, P., Bijaoui, G., de Mouzon, J., Chapron, C. **In women with endometriosis anti-Mullerian hormone levels are decreased only in those with previous endometrioma surgery.** *Hum. Reprod.* 2012; 27: 3294–3303
- Sun, Z., Song, J., Zhang, X., Wang, A., Guo, Y., Yang, Y., Wang, X., Xu, K., Deng, J. **Novel SWATHM technology for follicular fluid metabolomics in patients with endometriosis.** *Pharmazie* 2018; 73: 318–323
- Vouk, K., Ribič-Pucelj, M., Adamski, J., Rižner, T.L. **Altered levels of acylcarnitines, phosphatidylcholines, and sphingomyelins in peritoneal fluid from ovarian endometriosis patients.** *J. Steroid. Biochem. Mol. Biol.* 2016; 159: 60–69
- Wellbery, C. **Diagnosis and treatment of endometriosis.** *Am. Fam. Physician* 1999; 60: 1753–1762
- Yang, C., Geng, Y., Li, Y., Chen, C., Gao, Y. **Impact of ovarian endometrioma on ovarian responsiveness and IVF: a systematic review and meta-analysis.** *Reprod. Biomed. Online* 2015; 31: 9–19

Received 11 April 2019; received in revised form 18 July 2019; accepted 6 August 2019.